

A Delicate Thread

Traces left

Vantongerloo, Bill and Florsheim in Chicago

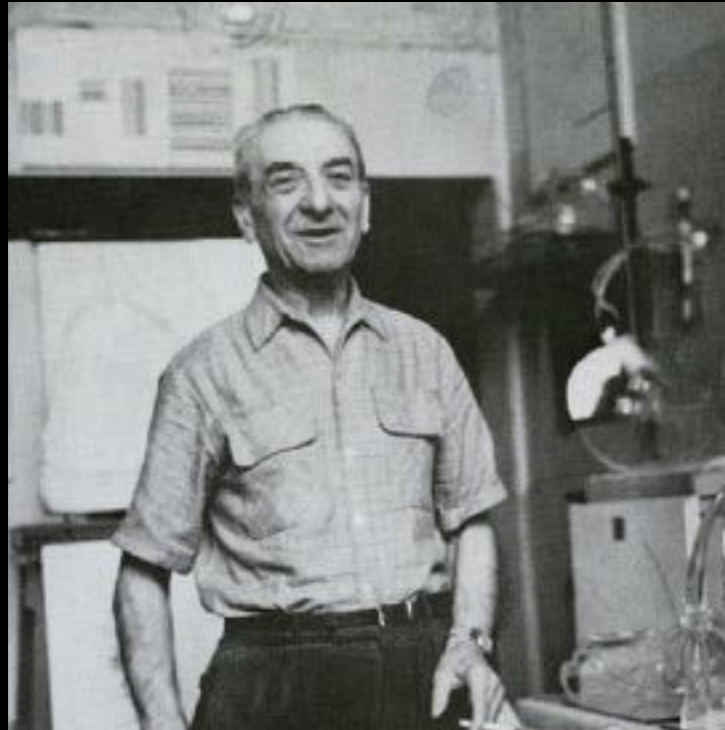
Who were these people?

How is their work related?

What is to be learned from them?

Georges Vantongerloo

1888-1966
Paris



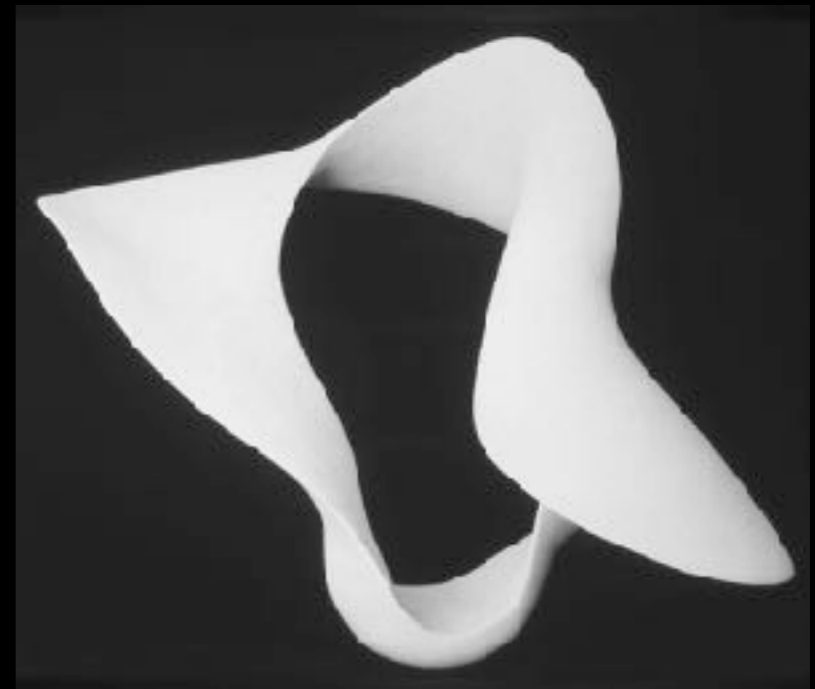
Max Bill

1902-1995
Zurich



Lillian Florsheim

1896-1988
Chicago



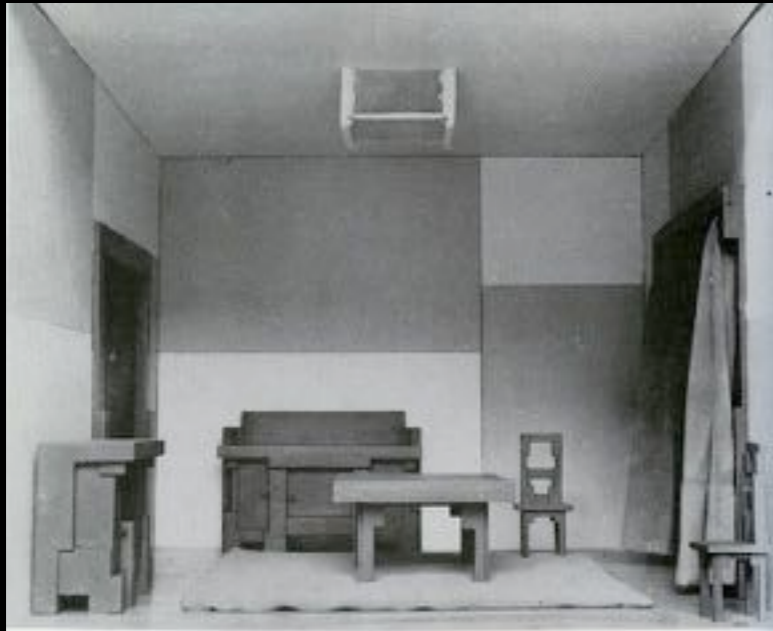
Vantongerloo



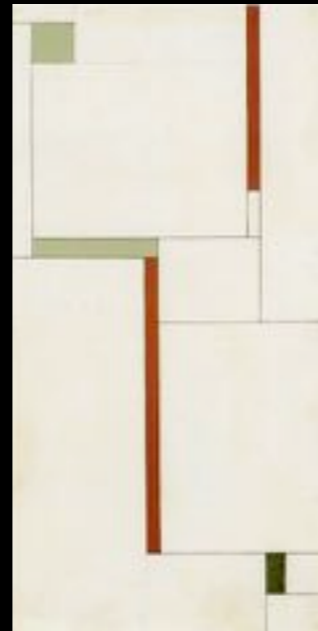
Etude No. 1, 1917



Construction in a Sphere, 1918



1926



1938



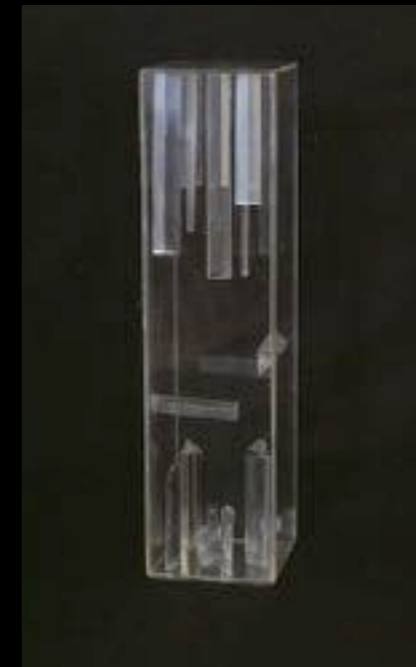
1950



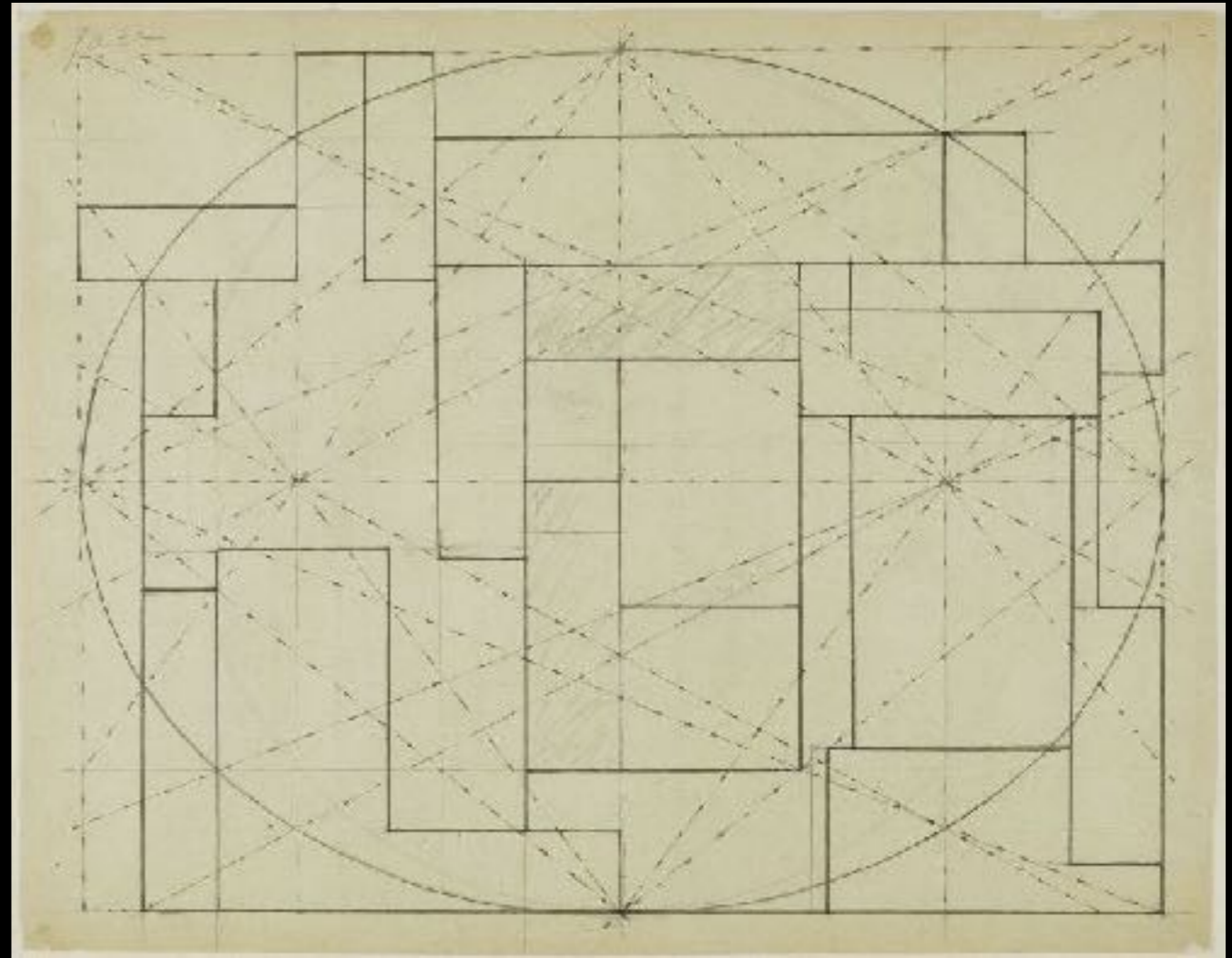
1935



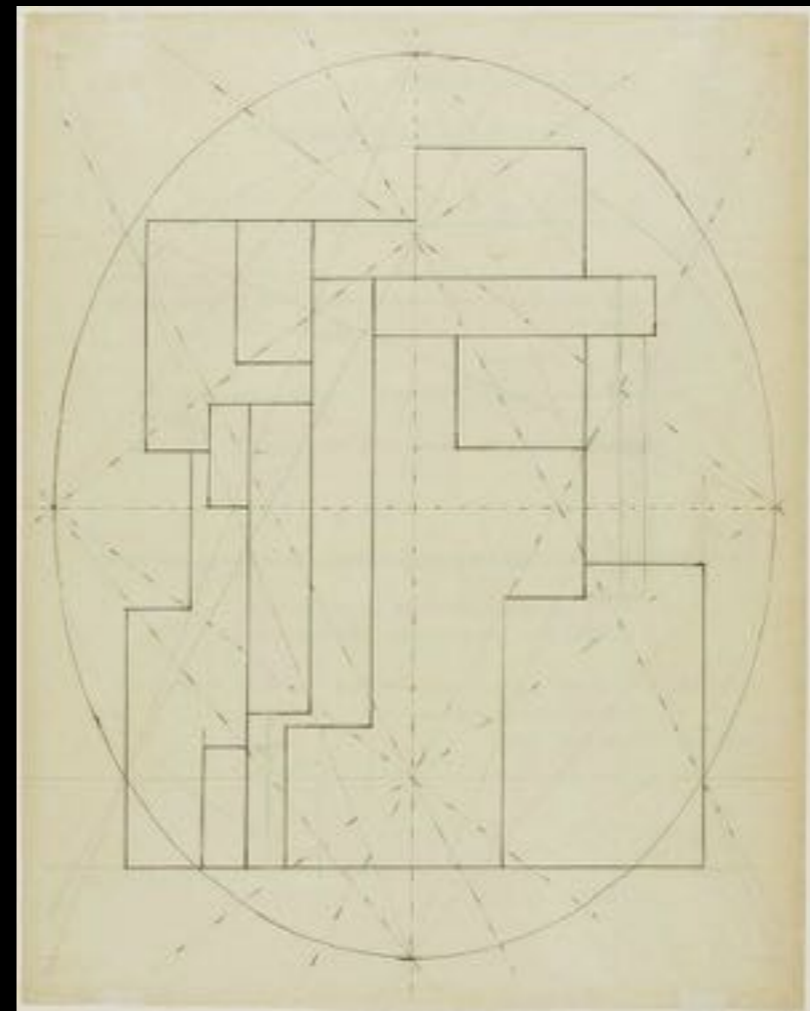
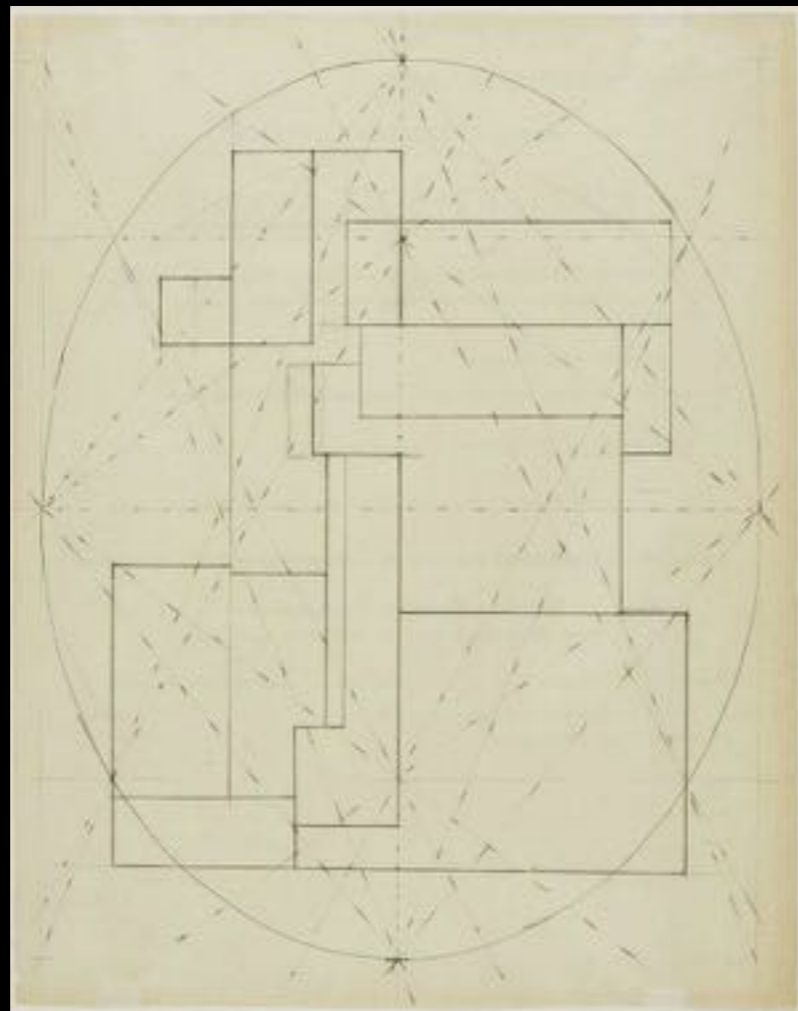
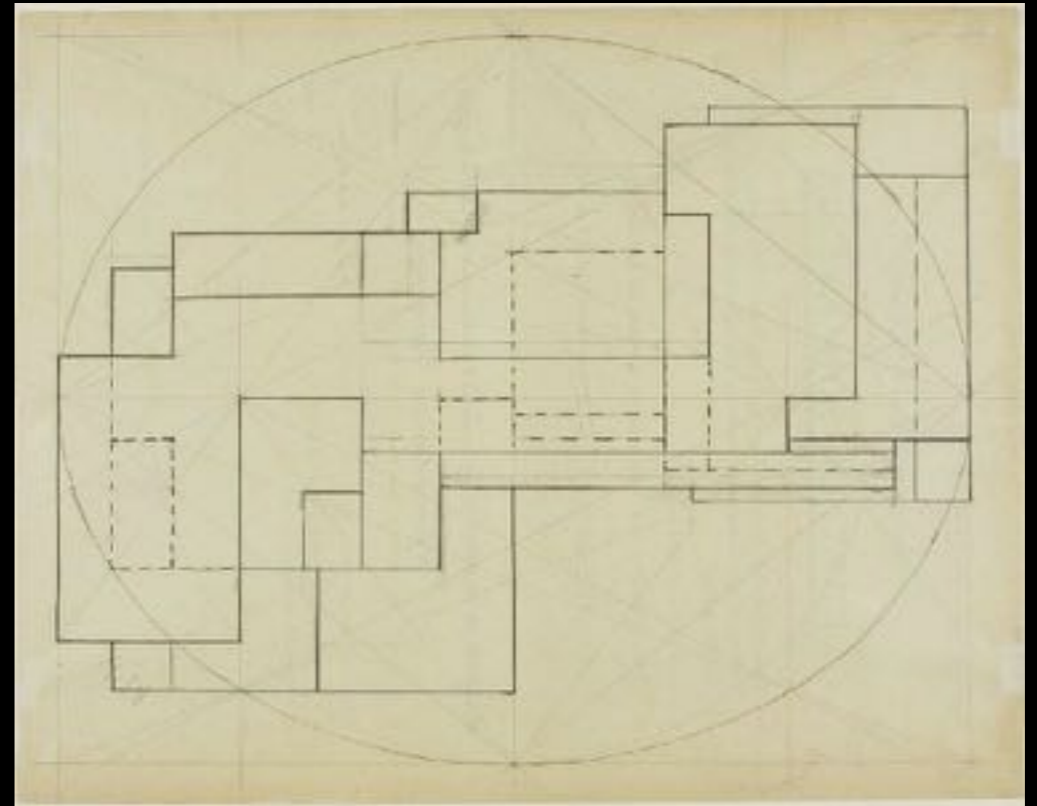
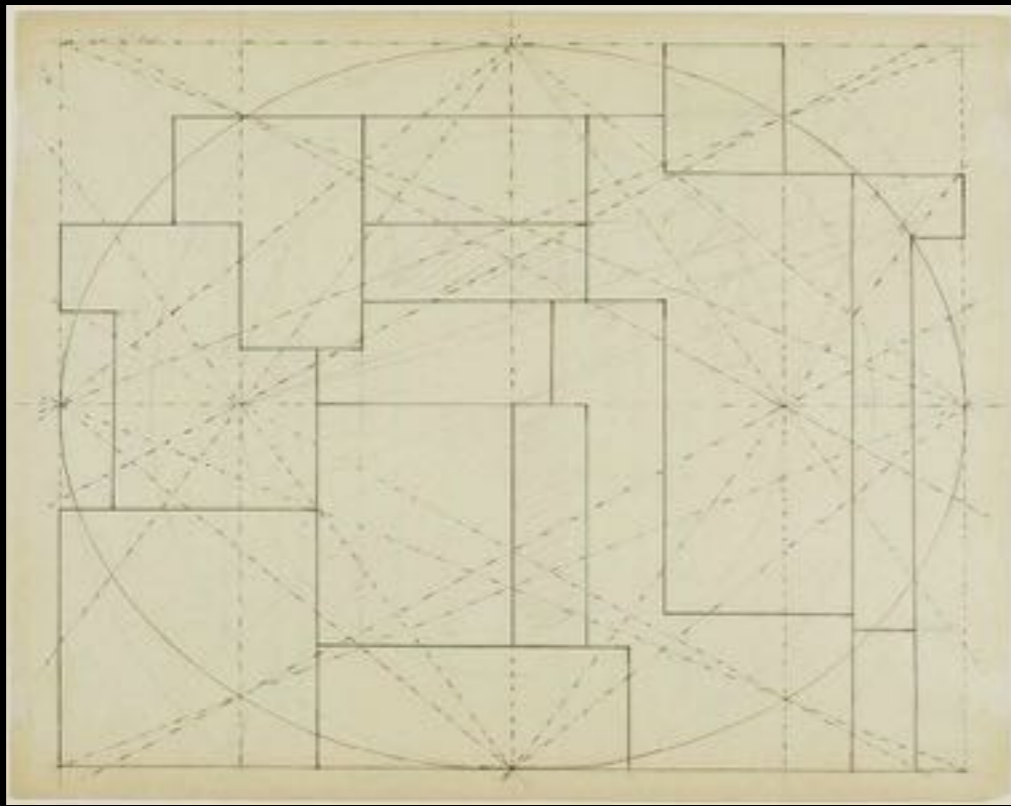
1946

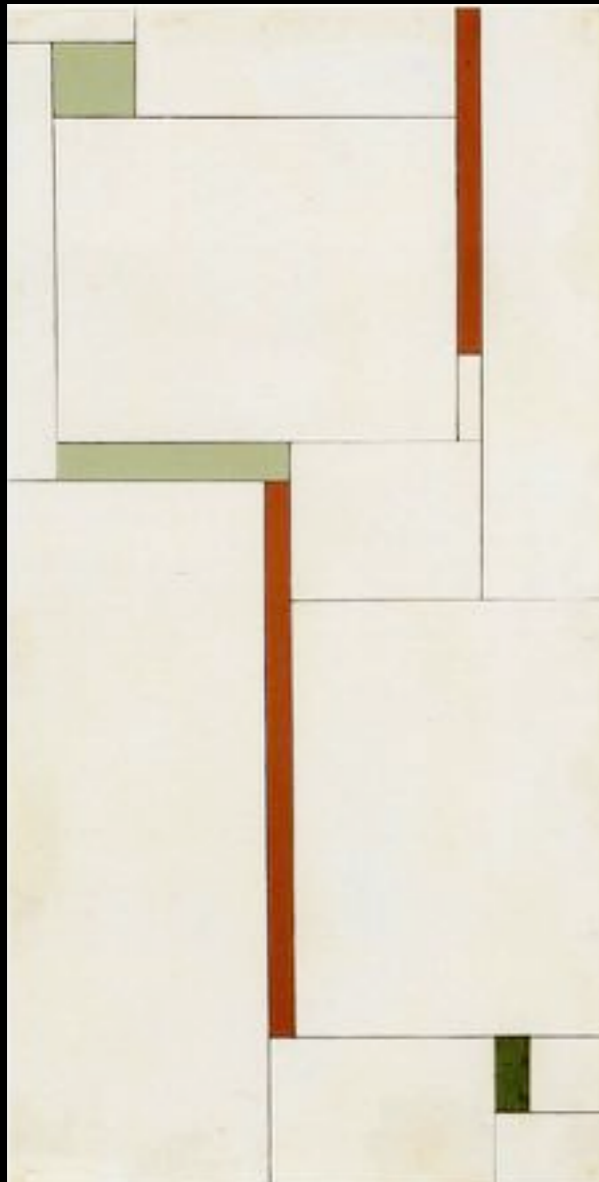


1958

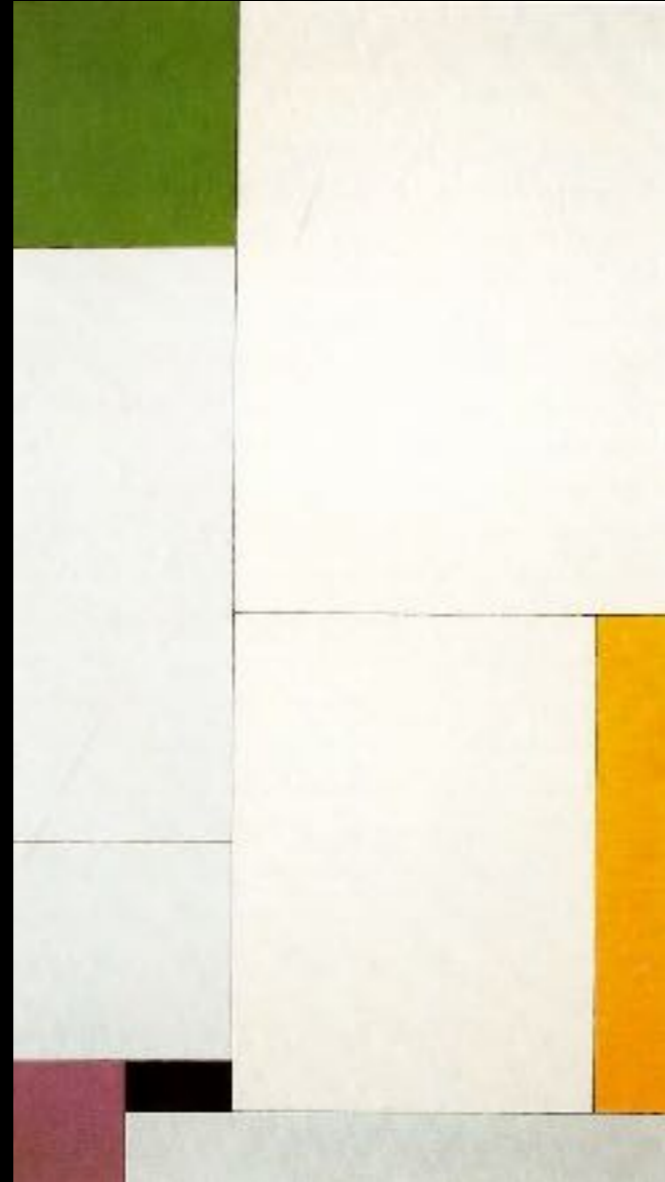


Interrelation of Volumes from the Ellipsoid, 1926

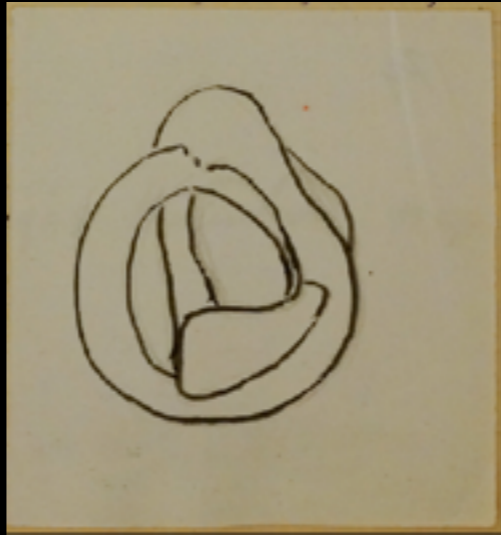




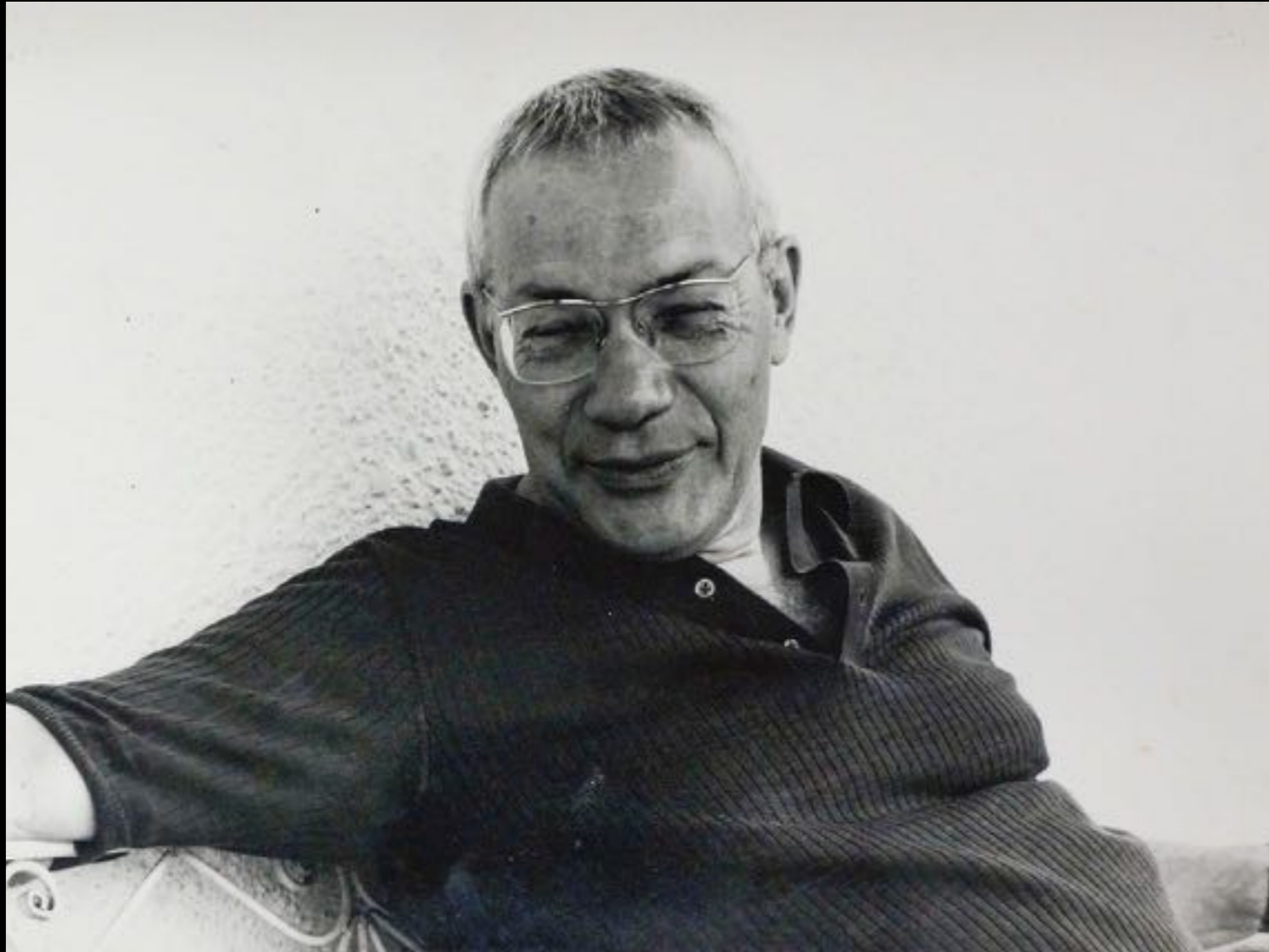
Construction brown, greenish, green
(1938)



Curving Function Green Brown
(1938)



Bill



Max Bill (1908-1994)

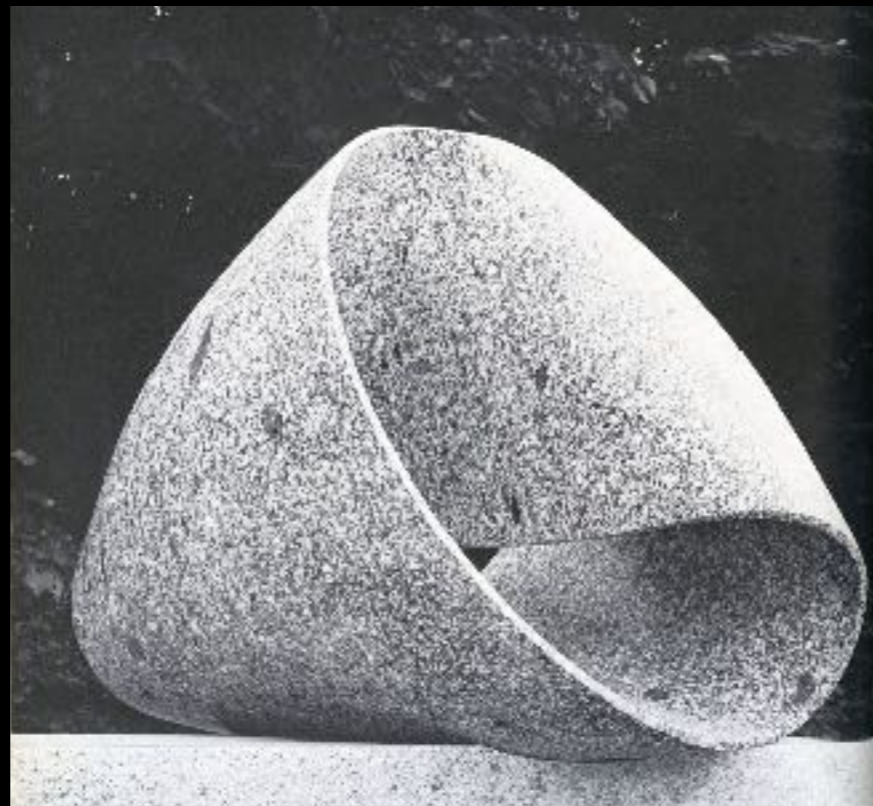
German, worked in Switzerland
met Vantongerloo c. 1935,
very close friends

Bauhaus student/teacher
designer
typographer
historian and educator
painter
sculptor
architect





Continuity
in cement, 1947-48



Endless Ribbon
version IV, 1958-1964



Continuity
in granite, 1983-86

Versions I-V vary:

- support: hanging or free standing
- thickness: uniform or changing
- dimensions
- material: plaster, cement, bronze, stone



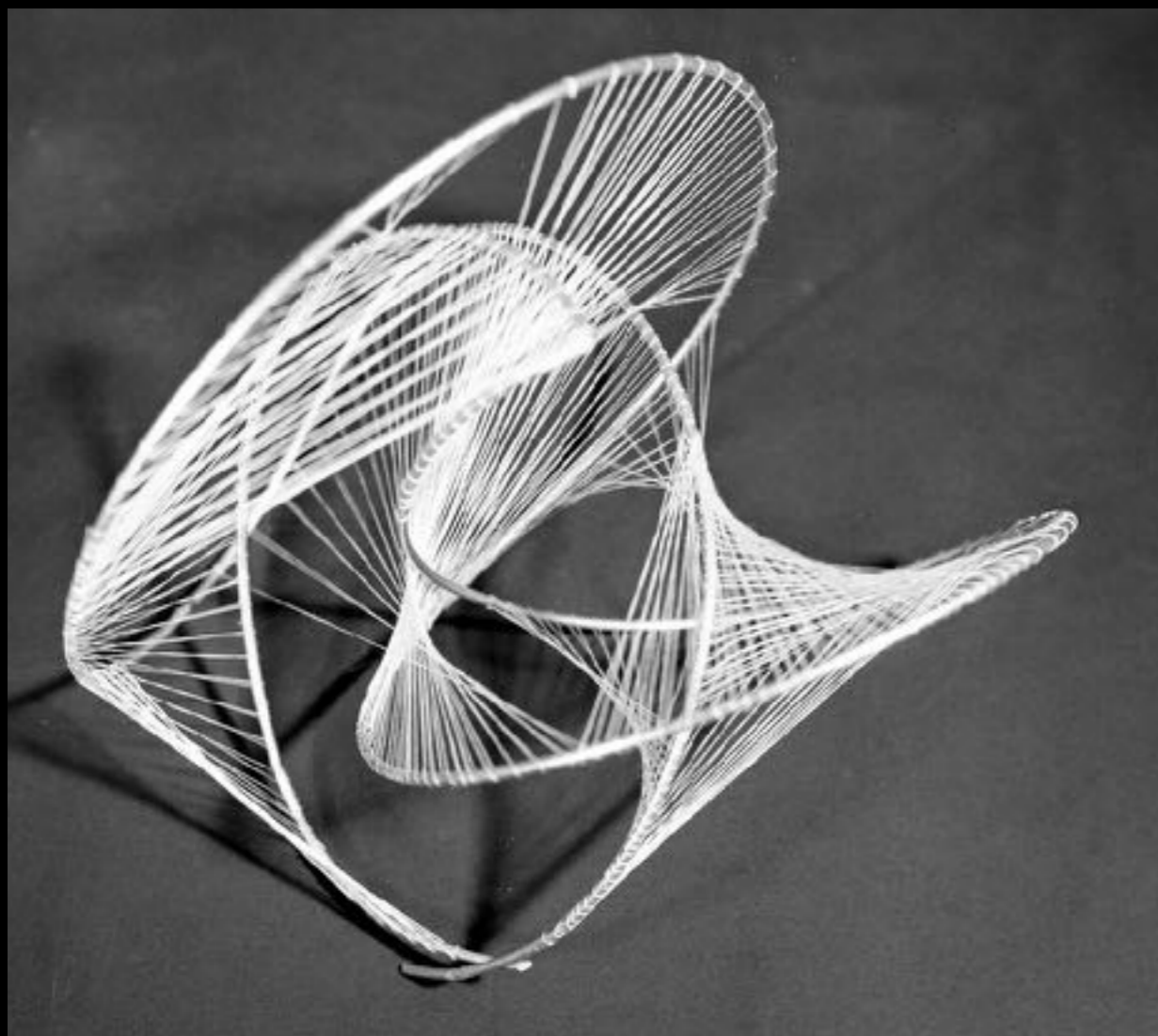
hexagonal surface in space with complete circumference, 1953

This linear sculpture describes an unlocatable space that represents neither an interior nor an exterior space, just as the "hexagon" itself does not belong to the euclidean concept of space, one might also think of this sculpture as a drawing in space....

– From Surface to Space, Max Bill, 1951

Florsheim





string model, c. 1953



Porcupine, in plexiglas, c. 1963



Double Form, c. 1961-62



untitled, c. 1961-62

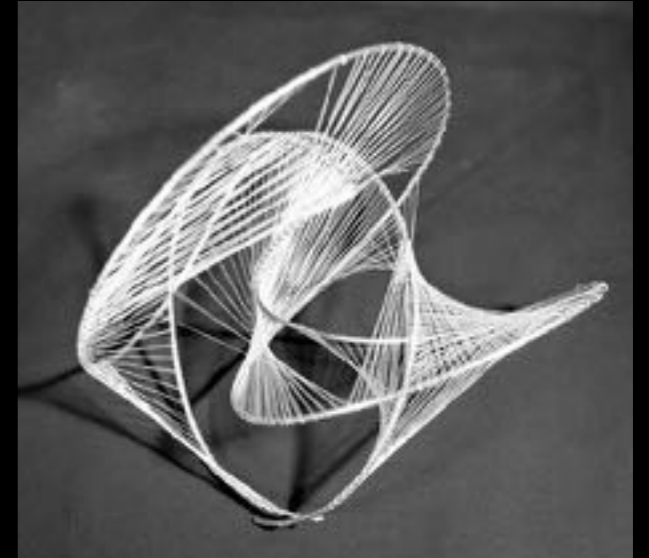


Vantongerloo

Bill

Florsheim

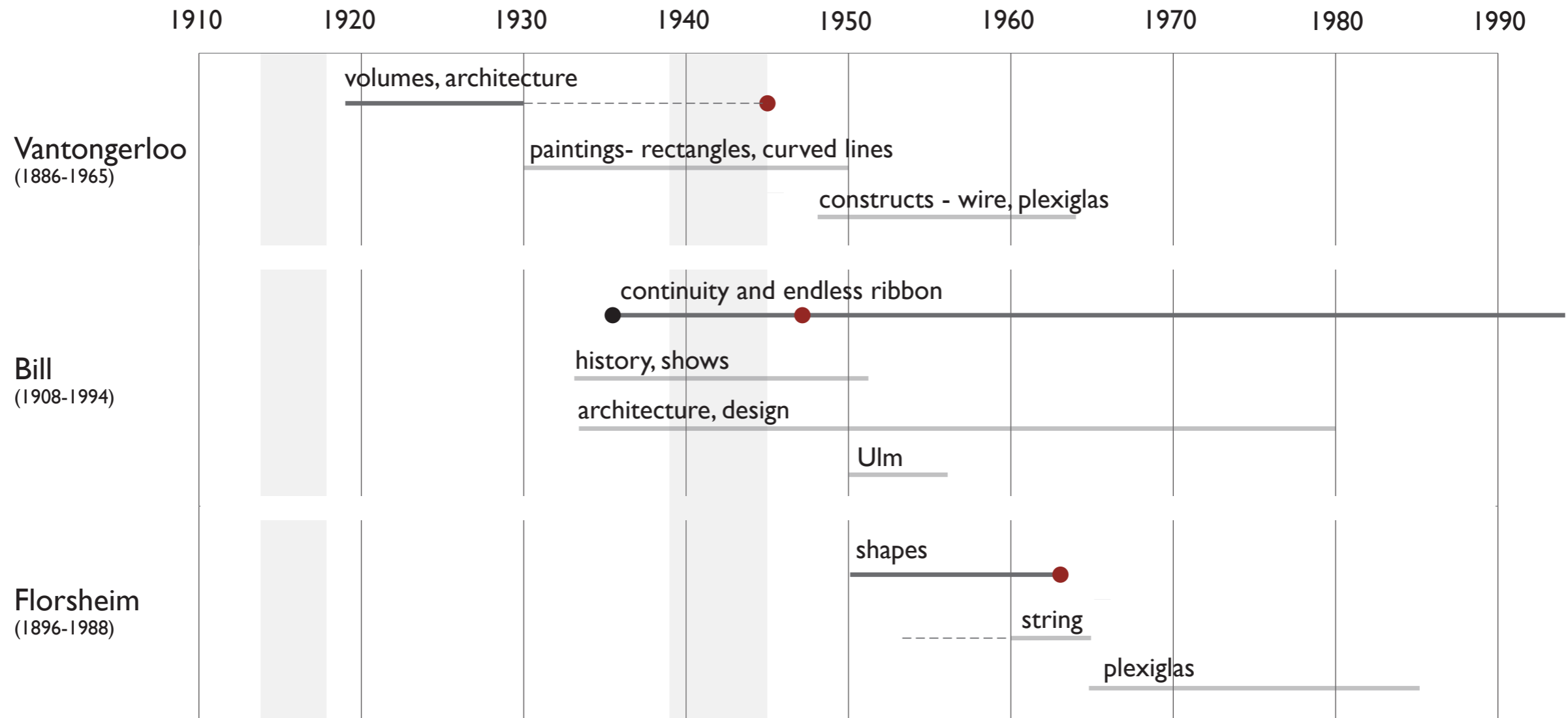
line



surface



Vantongerloo, Bill, Florsheim



Outreach: Vantongerloo



1930
Opening *Cerle et Carré* exhibition, Paris
Michel Suephor, Florence Henri, Piet Mondrian,
Vantongerloo, Sophie Taeuber-Arp, Hans Arp, Jean
Gorin, M/Mme Torres-Garcia



1961
studio, Paris



L'ART

ET SON

AVENIR

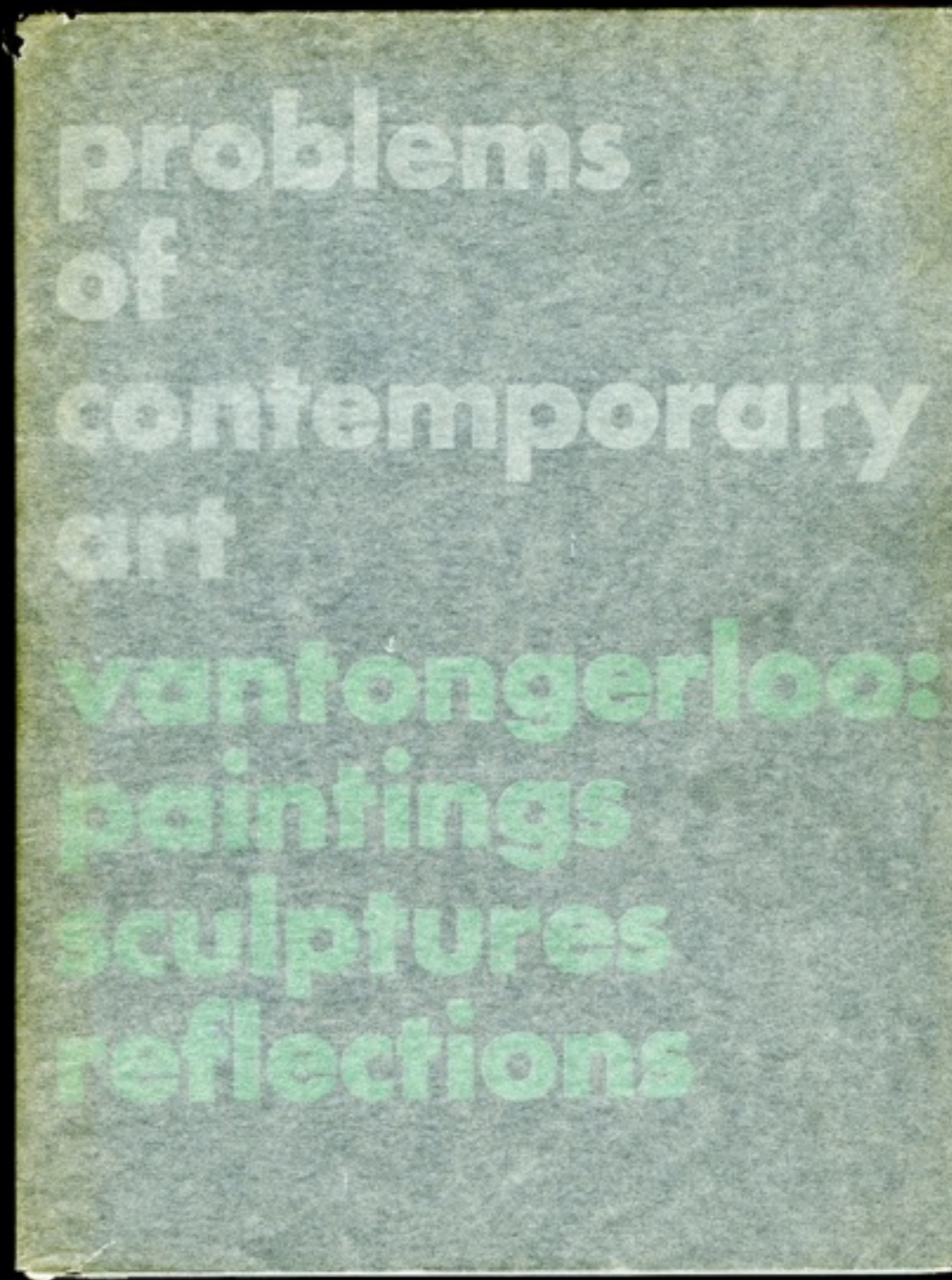
PAR

E. VANTONGERLOO

EDITION "DE SIEKEL..

ANVERS 1924

1924



problems

of

contemporary

art

van tongerloo:

paintings

sculptures

reflections

1948



Georges Vantongerloo explains to Max Bill
the sculpture *Ecliptics* (w.c. no. 283)
at the Panathénées de la Sculpture Mondiale in Athens,
September 8, 1965.

Photo Carmen Martinez

Vantongerloo with Bill, Athens, 1965



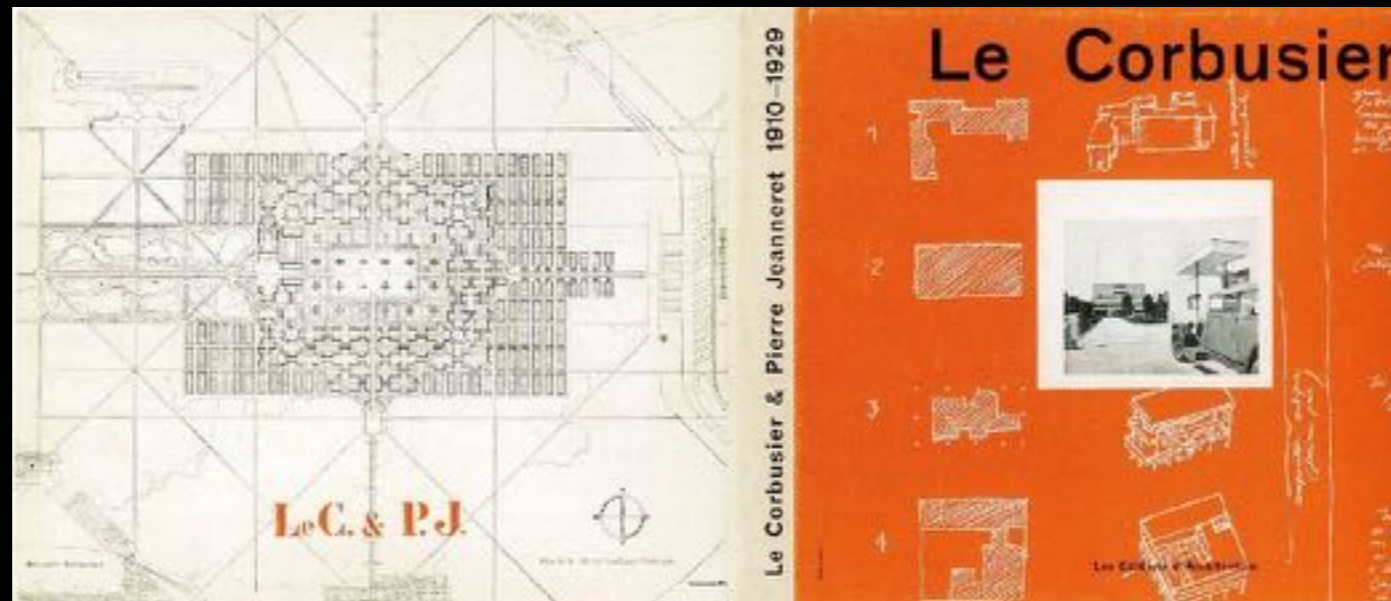
Vantongerloo with Jacob and Max Bill, Zurich, 1950

Outreach: Bill



Max Bill at the Bauhaus (1928)

Schawinsky, Weiniger, Joost Schmidt, Max Bill, Lux Feininger, Röseler



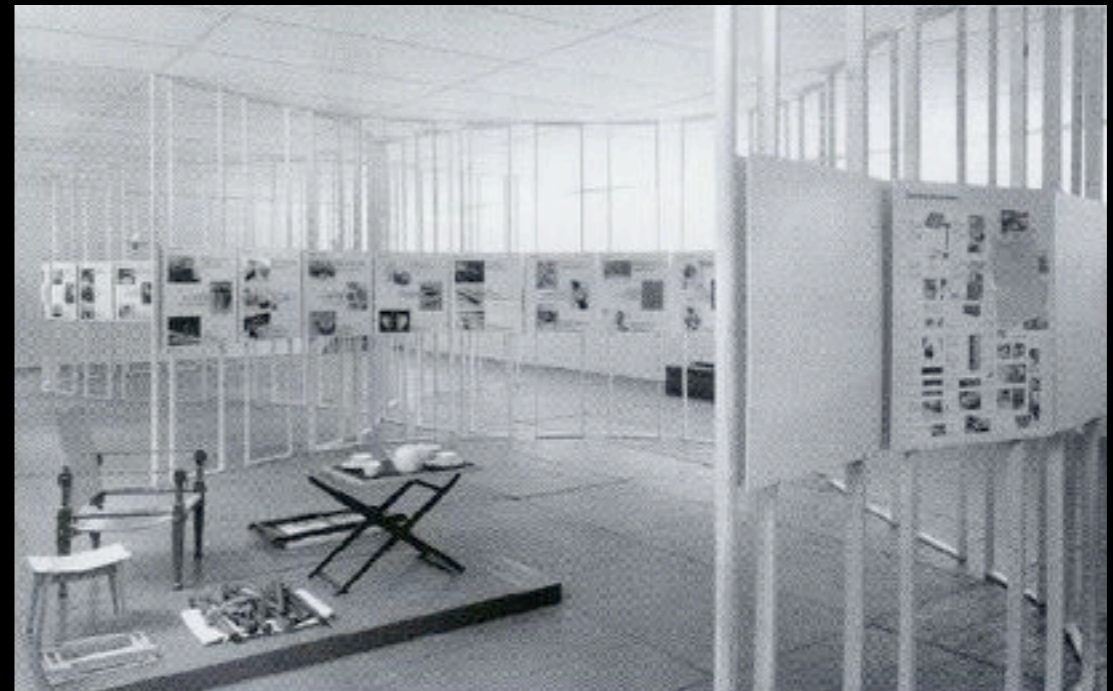
Le Corbusier history, through 1938



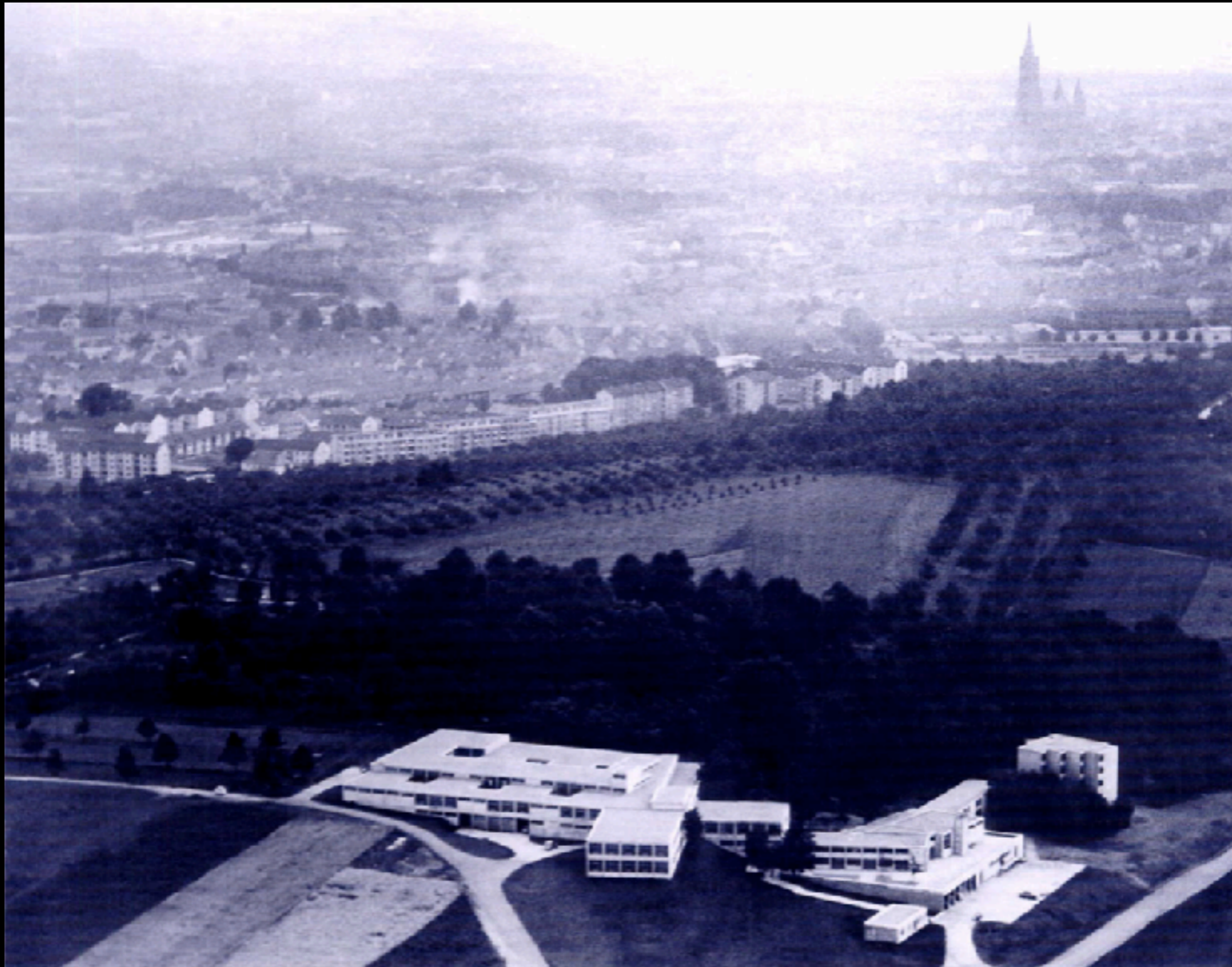
Modern Swiss Architecture, 1949



Die gute Form show, 1948
Form book, 1950



Ulm

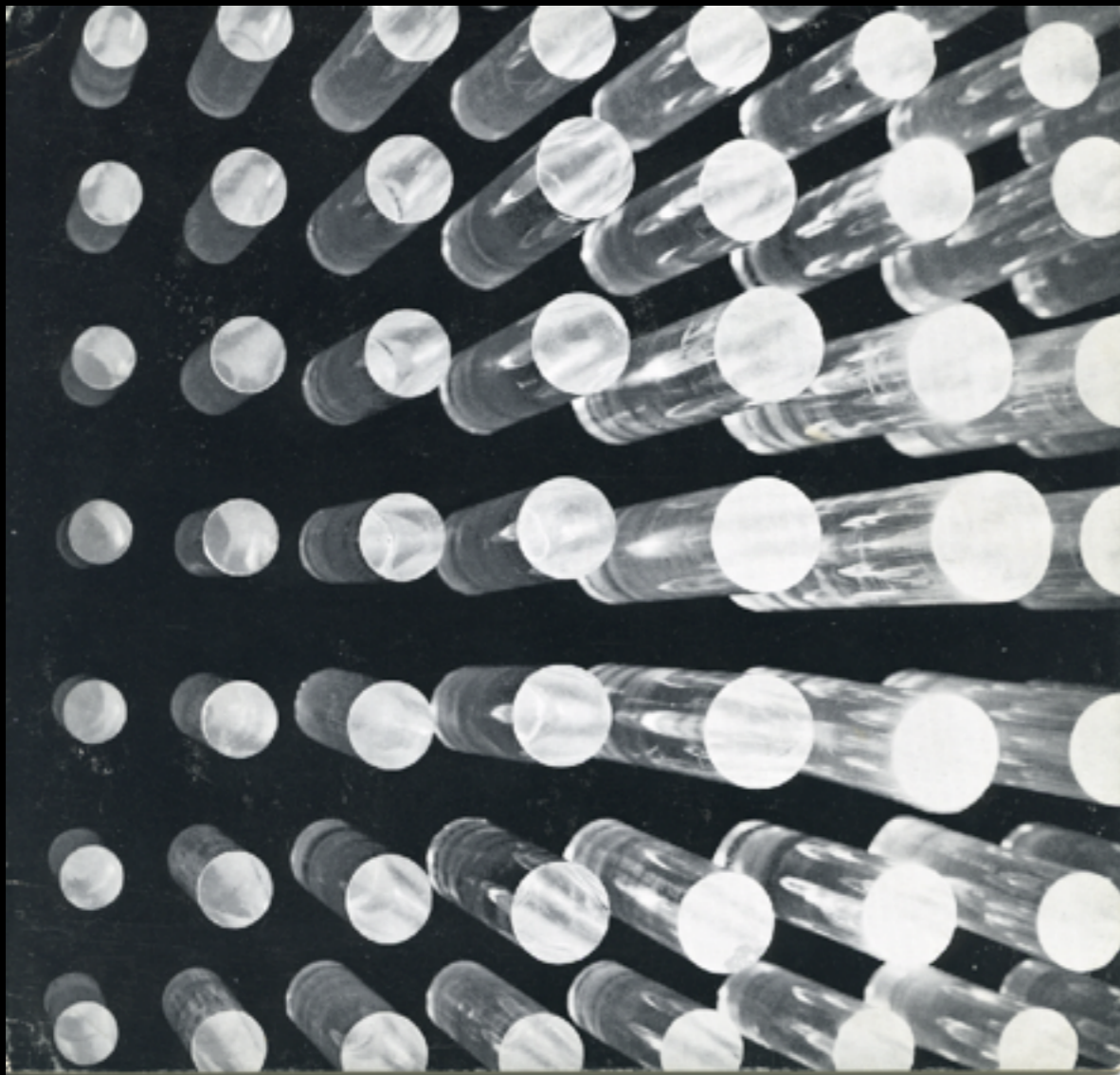


Positivism vs. process



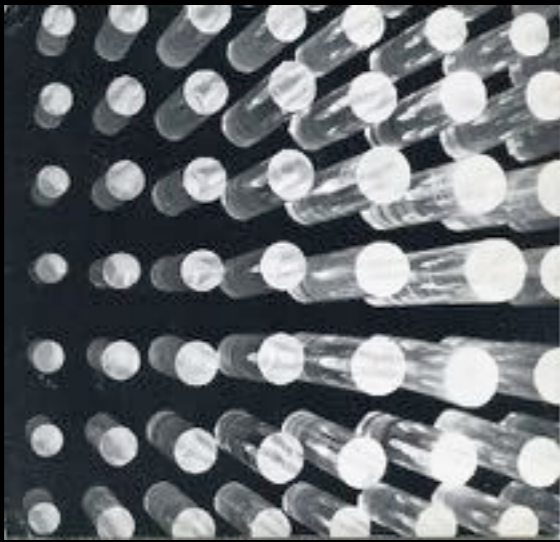
furniture and industrial design

Outreach: Florsheim



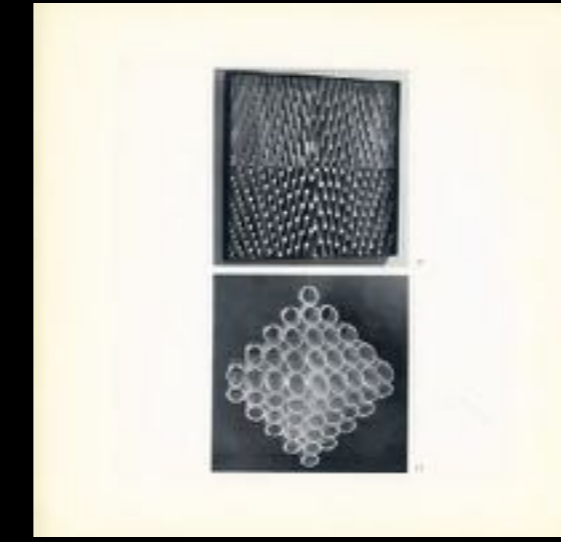
FLORSHEIM

GALERIE DENISE RENÉ
124 RUE LA BOÉTIE PARIS
OCTOBRE - NOVEMBRE 1968



FLORSHEIM

GALERIE DENISE RENE
124 RUE LA BOETIE PARIS
OCTOBRE - NOVEMBRE 1966





Galerie Denise Rene Hans Meyer, Germany, 1967

Vom
Konstruktivismus
 zur Kinetik
 1917 bis 1967

- Agam
- Alviani
- Anuszkiewicz
- Asis
- Jacob Bill
- Boriani
- Böhm
- Boto
- Bury
- Castellani
- Calderara
- Cahn
- Claisse
- Colombo
- Cruz Diez
- Demarco
- Dewasne
- Di Teana
- Duarte
- Florsheim
- Frederikson
- Garcia Rossi
- Geissler
- Gerstner
- Graevenitz
- Greenham
- Klefer
- Kriegelstein
- Kelly
- Le Blanc
- Le Parc
- Mack
- Mari
- Megert
- Morellet
- Morgan
- Morisson
- Nickel
- Oehm
- Olson
- Pasmore
- Picelj
- Pohl
- Rickey
- Sanders
- Schoeffer
- Sobrino
- Sommer
- Soto
- Stein
- Tinguely
- Tomitaro Nachi
- Tomasello
- Uecker
- Vardanega
- Mary Vieira
- Weber
- Wilding
- Yveral
- Zehringer
- Albers
- Arp
- Baertling
- Baumeister
- Max Bill
- Calder
- R. Delaunay
- S. Delaunay
- Duchamp
- Fleischmann
- Gabo
- Glarener
- Graeser
- Herbin
- Heurtaux
- Kandinsky
- Kassak
- Kupka
- Le Corbusier
- Leger
- Lissitsky
- Lohse
- Mansouhoff
- Moholy Nagy
- Mondrian
- Mortensen
- Nicholson
- Pevsner
- Picabia
- Richter
- Schlemmer
- Seuphor
- Stazewski
- Taeuber Arp
- Van Doesburg
- Van Tongerloo
- Vordemberge Gildewart
- Vasarely

Vom Konstruktivismus zur Kinetik 10. Juni bis 10. S

- artists with works in Florsheim's collection

Issues:

a line in space

continuous surface

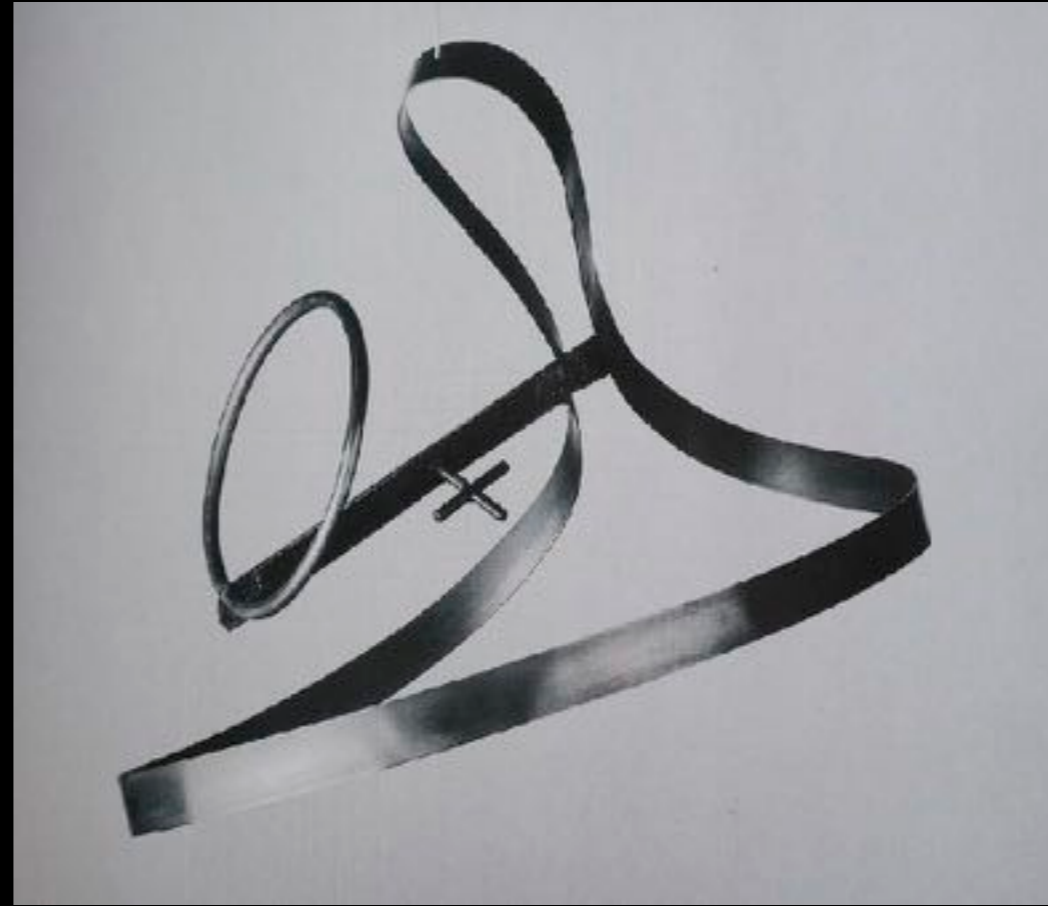
relationship to architecture?

why Chicago?

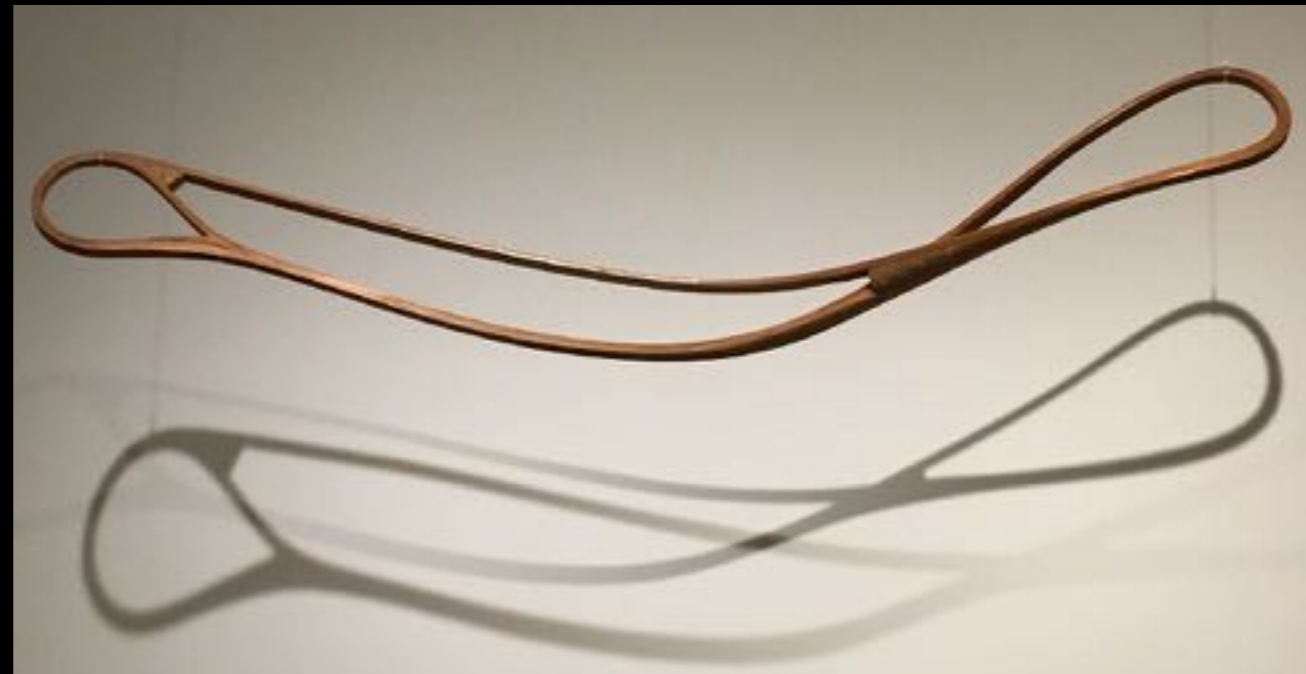
Line in Space



Gaudí



Kobra

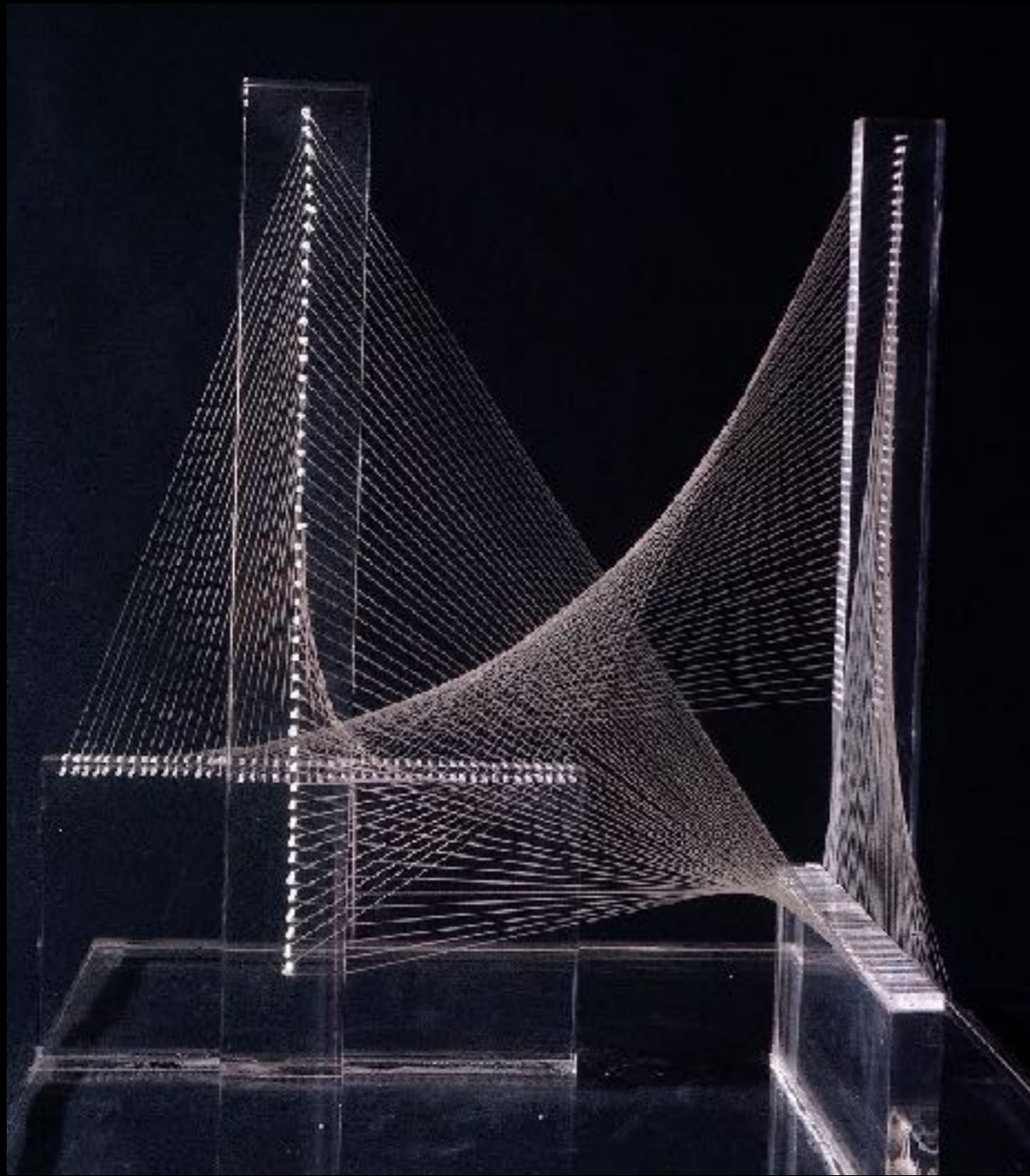


Tatlin

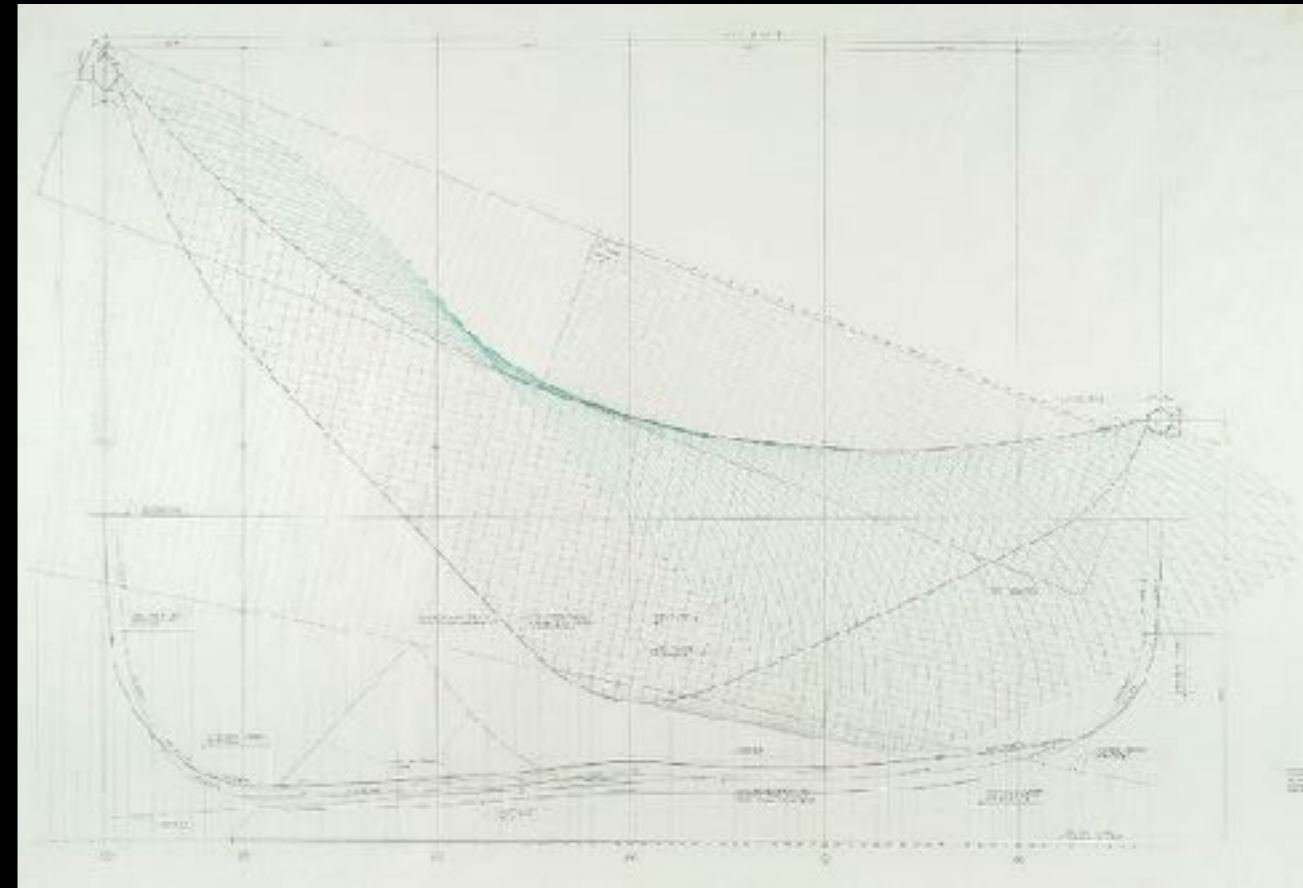


Bill: line in space





Curved Surfaces, 1964



Marina City Theater study, 1962-64

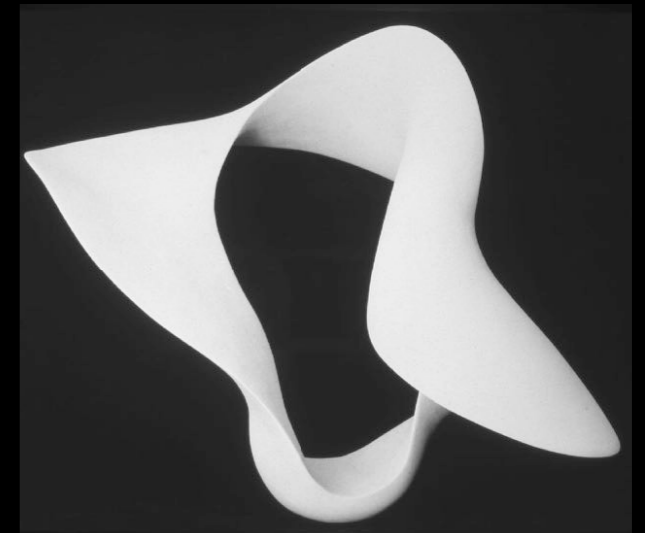
Vantongerloo



Bill



Florsheim



art
(Chicago)

engagement
(elsewhere)

